

Ian Sanderson

Chatterings



At the heart of CHATTERINGS is CHATTERPIE - a fabulous stylised floral design from the Ian Sanderson Archive. The Chatterings collection explores colour groups from pale and interesting to bright and vivacious.





Hana Blue



Greenway



Paradise



Berbere



Casablanca



Whisper



Vintage



Velvet | Coral Sea



Velvet | Tiger Moth

Chatterpie Linen & Velvet

Essentially a tree of life design, it's moderate scale and balance of multi colours make it a bold feature for our new collection.

Nine colour ways, seven printed on textured, heavy linen and two on luxurious cotton velvet explore colour groups from pale and interesting to bright and vivacious.







Image | Wesley Hall
Chatterpie Whisper



Image | Wesley Hall
Wigeon Moorland



Aztec



Jewel



Dove



Geranium

Somana

A large scale horizontal striped design with geometric elements of zig zag, lozenge and chequer board woven in viscose chenille, cotton and linen. A strident upholstery fabric in four colour ways.







Wigeon - Moorland

Wigeon

A large twill Scottish plaid in beautifully soft and muted colours of lamb’s and Shetland wools.

Wagtail Plaid

Delicately coloured intricate plaid twill woven in Lancashire in soft Shetland wool.



Wagtail - Sandstone

Mandarin Plaid

Wonderfully fine Scottish wool plaid with exuberant colours. Just one amazing colour way



Mandarin Plaid Flame









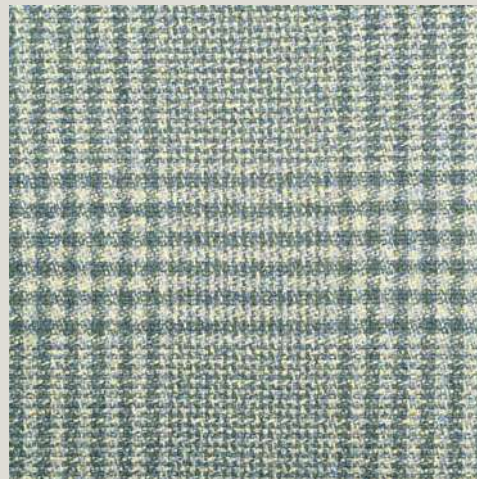
Slate Blue



Green Finch



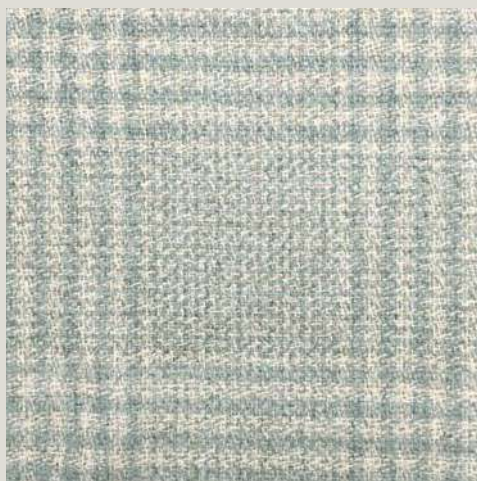
Rose Poll



Kingfisher



Robin



Dove

Chiff Chaff Plaid

Specially twisted thick and thin wool yarns are woven in a bird's eye weave to create this textured and colour flecked Highland tweed. The design is a classic enlarged Glen plaid.





Putty



Clay



Sea Green



Scarlet



Ink Blue



Rock Pool



Kale



Large scale- to show medallion design

Sulla

Sumptuous and opulent chenille weave with subtle medallion design in softly rippling relief.



Ian Sanderson

www.iansanderson.co.uk

sales@iansanderson.co.uk

samples@iansanderson.co.uk

+44 (0)1635 017810